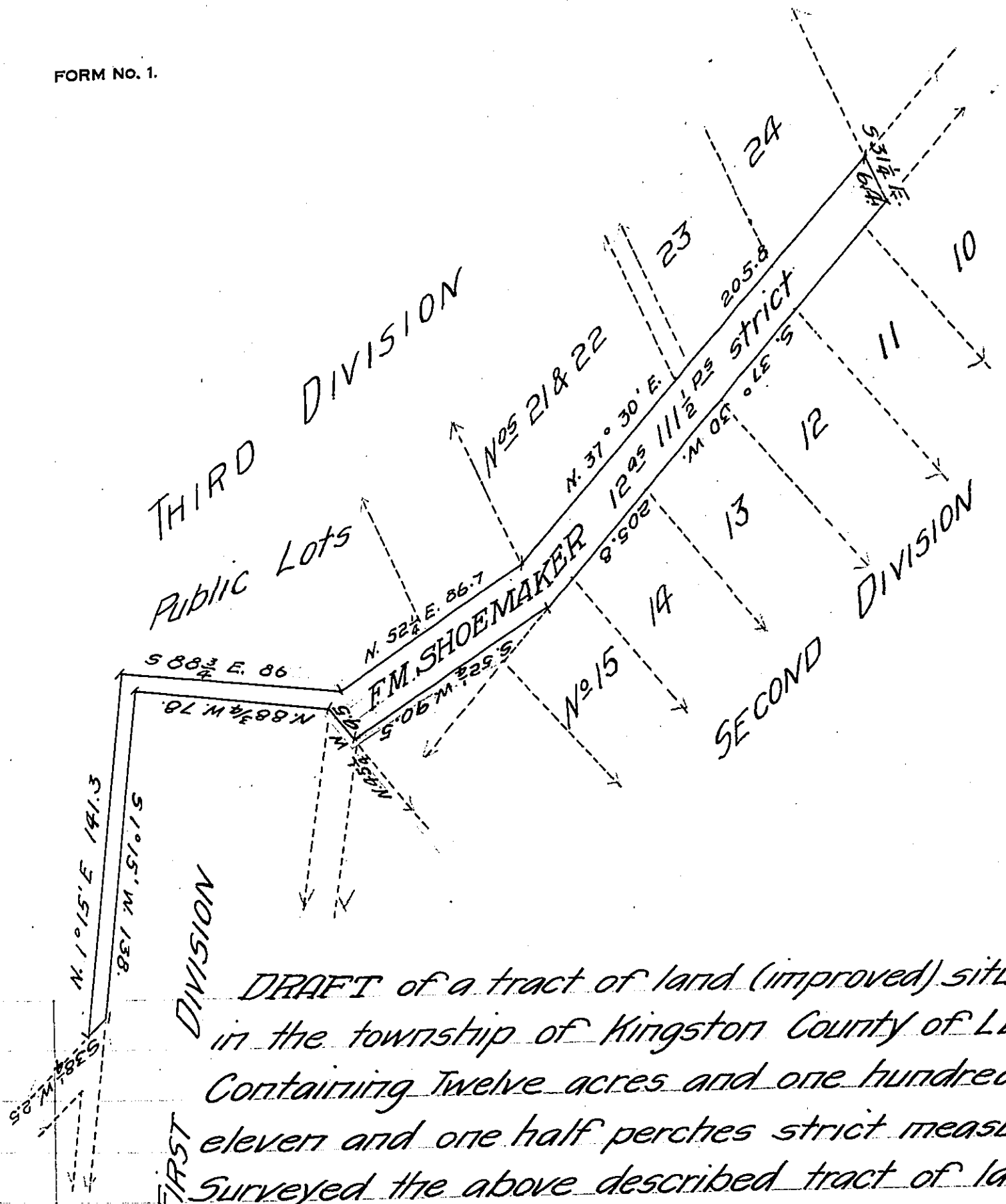


FORM NO. 1.



DRAFT of a tract of land (improved) situate
 in the township of Kingston County of Luzerne
 Containing Twelve acres and one hundred and
 eleven and one half perches strict measure
 Surveyed the above described tract of land
 to F.M. Shoemaker the 5th day of August A.D. 1867 in
 pursuance of his warrant dated the 5th day of
 June A.D. 1867

Hon. J.M. Campbell
 Surveyor General

John Sturdevant
 Surveyor for Luzerne Co.

IN TESTIMONY that the above is a copy of the original remaining on file in
 the Department of Internal Affairs of Pennsylvania, made
 conformably to an Act of Assembly approved the 16th day of
 February 1833, I have hereunto set my hand and caused
 the Seal of said Department to be affixed at Harrisburg,
 this twentieth day of March 1907

Geo. D. Brown
 Secretary of Internal Affairs.